

---

# MIMI

# PETRAKIS

## PORTFOLIO

**mimi.petrakis@gmail.com**

**mimipetrakis.com**

**0418 752 005**

---

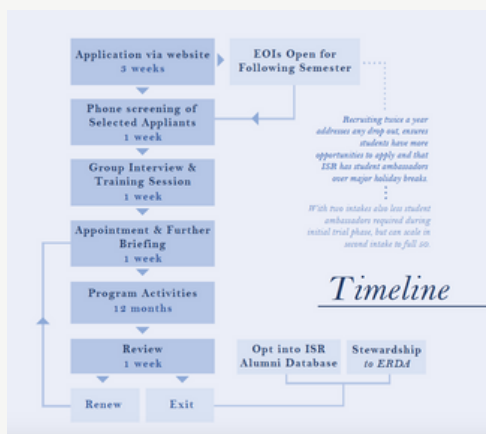
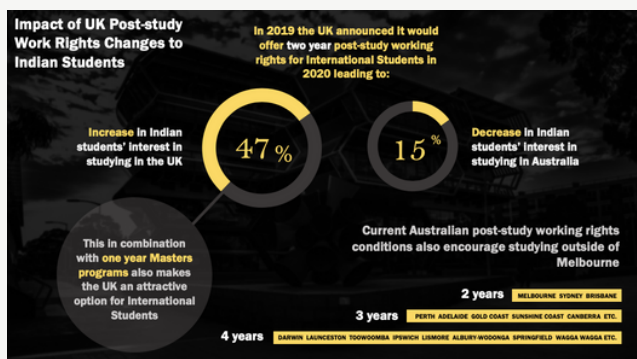
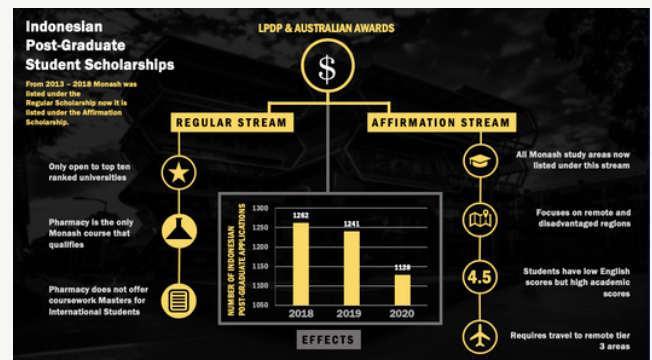
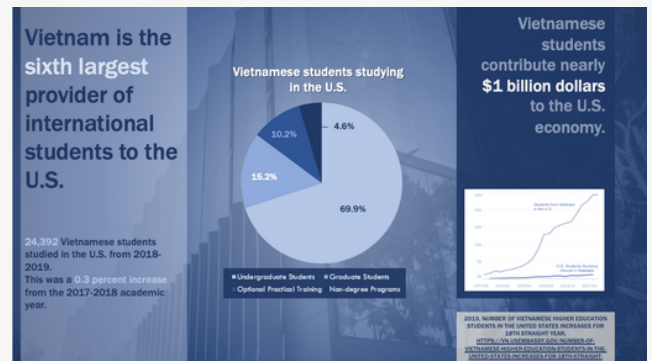
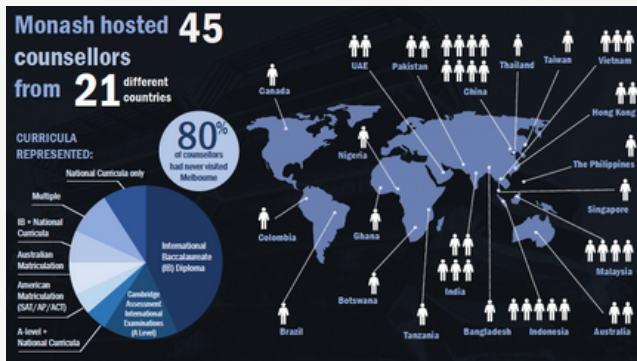
---

# INFOGRAPHICS



**Infographic for the Financial Times Article:**  
**“How AI is Supercharging the Customer Experience”**

# INFOGRAPHICS





# SOCIAL MEDIA

**FUNLAB!** | **MERKLE** | **FutureBrand**

**SXSW 2023**  
**Competitive Socialising:**  
The Ultimate Experience

October 19th | 1.00pm  
International Convention Centre



**SXSW 2023**

**Competitive Socialising:**  
The Ultimate Experience

**FUNLAB!** | **MERKLE** | **FutureBrand**

**LUCY ACHESON**  
Director of Customer Experience and Loyalty  
Merkle



**BLAISE WITNISH**  
Funlab

**RICHARD CURTIS**  
FutureBrand



**If customer centricity is important to you, the Merkle Customer Experience Imperatives are a must-read.**

**Emily Han**  
Chief Client Officer, Merkle Singapore



**M** a dentau company

**REPORT**  
**B2B FUTURES**  
THE VIEW FROM 2030



**M**

**THE FUTURE OF ANALYTICS**



**Hosted by Thomas Galluzzo**  
Director of Data Analytics

**MERKLE**



**The Merkle CX Imperatives provide tools and frameworks to start you on your path to digital literacy.**

**Justin Grant**  
Director and Head of Technology, Merkle ANZ



**M** a dentau company



# PROMOTIONAL FLYERS

**MONASH University**

## ENGINEERING:

### International Undergraduate Excellence Scholarship

No application required
 Total scholarship value is \$40,000
 **100** offered

The Engineering International Undergraduate Excellence Scholarship recognises outstanding academic results for students intending to enrol in an undergraduate or coursework Engineering course at a Monash campus in Australia.

Applications are not necessary, eligibility is assessed when you submit a course application.

#### WHY ENGINEERING AT MONASH?

Study abroad and exchange
 Engineers without borders
 Monash Industry Team Initiative (MITI)
 Engineering Leadership Program

Diploma of Languages
 Student Clubs
 Monash Motor Sports Team

Engineering Co-Op Education  
Students can undertake 3 or 6 month paid work placements
 Direct Entry into PhD Program with a high GPA

**Ranked 7**  
in the world for Engineering
   
  
**Ranked 66**  
in the world for Employability

Based on the 2020 QS World Rankings

**MONASH University**

ONE OF THE WORLD'S TOP 100 UNIVERSITIES

### Experience a successful global career.

Join the Monash Community one of the top 100 universities in the world where you will achieve your goal through an exciting and enjoyable experience.

#### Monash is globally ranked:

**6** for excellence
 **58** for innovation
 **75** for employability

#### Monash disciplines are ranked:

**1st** in Pharmacy, Education and Engineering and Technology

Based on THE Golden Age University rankings 2019, QS Rankings 2017–2020, THE World University Rankings 2017–2020, Reuters Top 75: Asia Pacific's Most Innovative Universities 2018.

### WAYS TO STUDY AT MONASH

MONASH COLLEGE	MONASH COLLEGE DIPLOMAS	FOUNDATION YEAR
<b>A guaranteed pathway to Monash University.</b> You won't find a better opportunity to experience new cultures and add a global perspective to your studies than at Monash College.	<b>Save time and money.</b> The only Go8 University that offers students courses which lead to second year entry into Monash degrees.  Diploma Part 1 (equivalent to Australian year 12) Diploma Part 2 (equivalent to first year university) visit <a href="http://www.monashcollege.edu.au">www.monashcollege.edu.au</a>	<b>The top choice for pathway</b> The Monash University Foundation Year (MUFY) offers courses that lead to the 1st year in one of Monash 10 faculties. Excellent innovative learning experience.

**There are more than 200 types of scholarships on offer.**  
 For example \$10,000 is given each year to excellent students undertaking a Bachelor of Engineering (Honours)  
 visit [www.monash.edu/study/scholarships](http://www.monash.edu/study/scholarships)

## HOW TO APPLY TO MONASH

FOR AUSTRALIAN OR NEW ZEALAND CITIZENS STUDYING OVERSEAS

### QUESTIONS?

If you have any questions don't hesitate to get in touch

EMAIL [future@monash.edu](mailto:future@monash.edu)

TELEPHONE 1800 MONASH (1800 666 274)

MONASH COURSE FINDER <https://study.monash/>

Australian citizens, Australian permanent residents, or New Zealand citizens undertaking equivalent Year 12 studies or post-secondary studies overseas intending to apply for semester one Monash undergraduate courses must do so via the **Victorian Tertiary Admissions Centre (VTAC)**.

#### KEY DATES

Monash's academic year commences in **late February**.  
 Applications via VTAC open in **early August** for commencement the following year.

#### STEP BY STEP APPLICATION GUIDE:

**1**

Create your [VTAC account](#) and fill in your details.  
 Applications for 2021 will open in **August**

**2**

Once logged in click 'Course Application' to start the application process

**MERKLE**

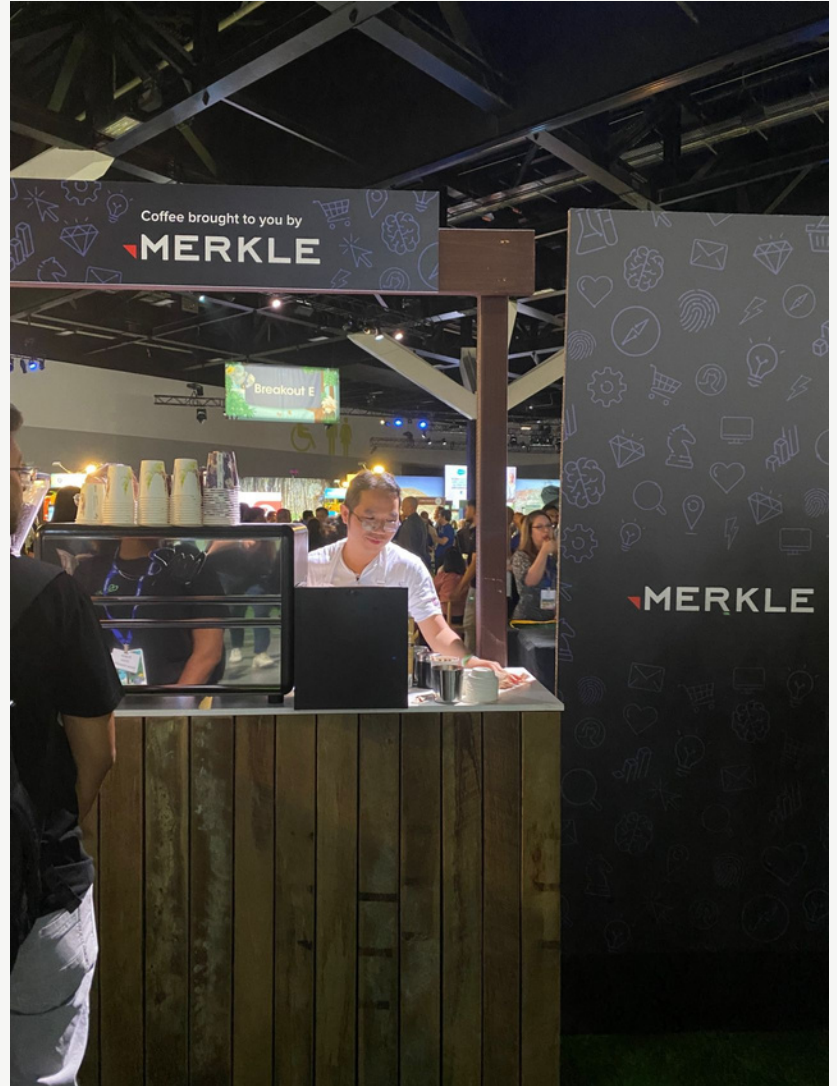
## SHAPE puts people first with a knock down rebuild of its digital staff portal.

An Australian success story, SHAPE has over 30 years' experience in fit-out, refurbishment and construction. Building on their long-term investment in culture and people, SHAPE embraced integration and automation to give staff a new digital hub to streamline and manage their HR processes.

With 526 staff, turnover of \$658m and a growing national portfolio across the health, hospitality, commercial, education and retail sectors, SHAPE is one of Australia's most trusted building partners.

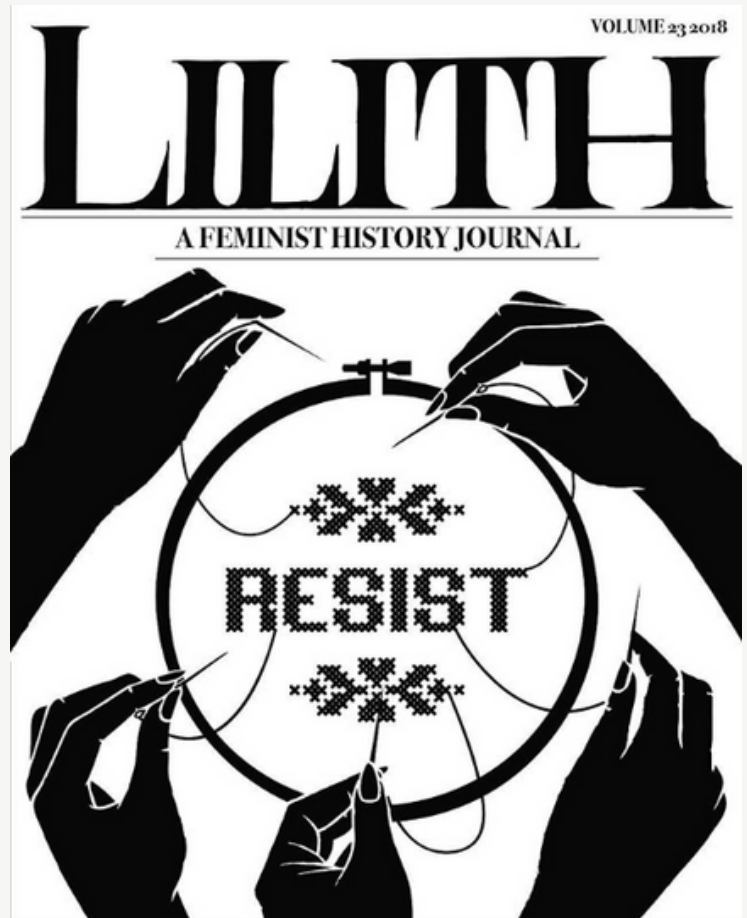


# EVENT COORDINATION/SIGNAGE





# POSTER DESIGN





# WEB DESIGN



HOME PORTFOLIO EVENTS CONTACT SHOP RESUME

## Mimi Petrakis

*artist | academic*



PORTFOLIO



EVENTS



CONTACT



SHOP

## PERSONAL WEBSITE



HOME PORTFOLIO EVENTS CONTACT SHOP RESUME



### *Prints*

Here you can purchase prints of my work, if you would like to ask about copies of works that aren't listed here or for alternate sizes please email me at [mimi.petrakis@gmail.com](mailto:mimi.petrakis@gmail.com)

Please also have a look at my [Etsy](#) and [RedBubble](#) pages for further works



Hildegard  
AU\$13.00



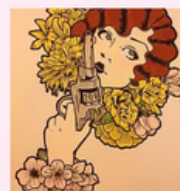
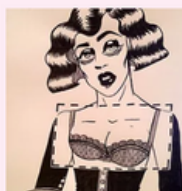
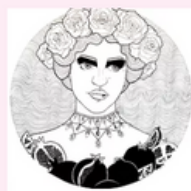
Destroy the Patriarchy  
AU\$13.00



Frida  
AU\$13.00



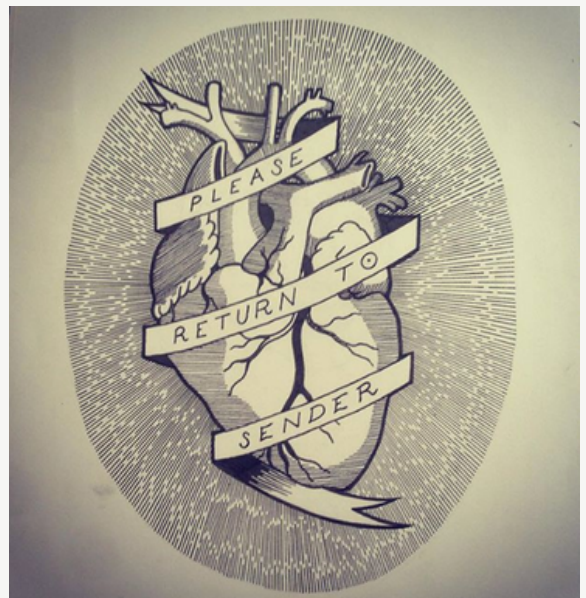
Domestic Bliss  
AU\$13.00



## ONLINE STORE

# ILLUSTRATION

---





# PAINTING

---

